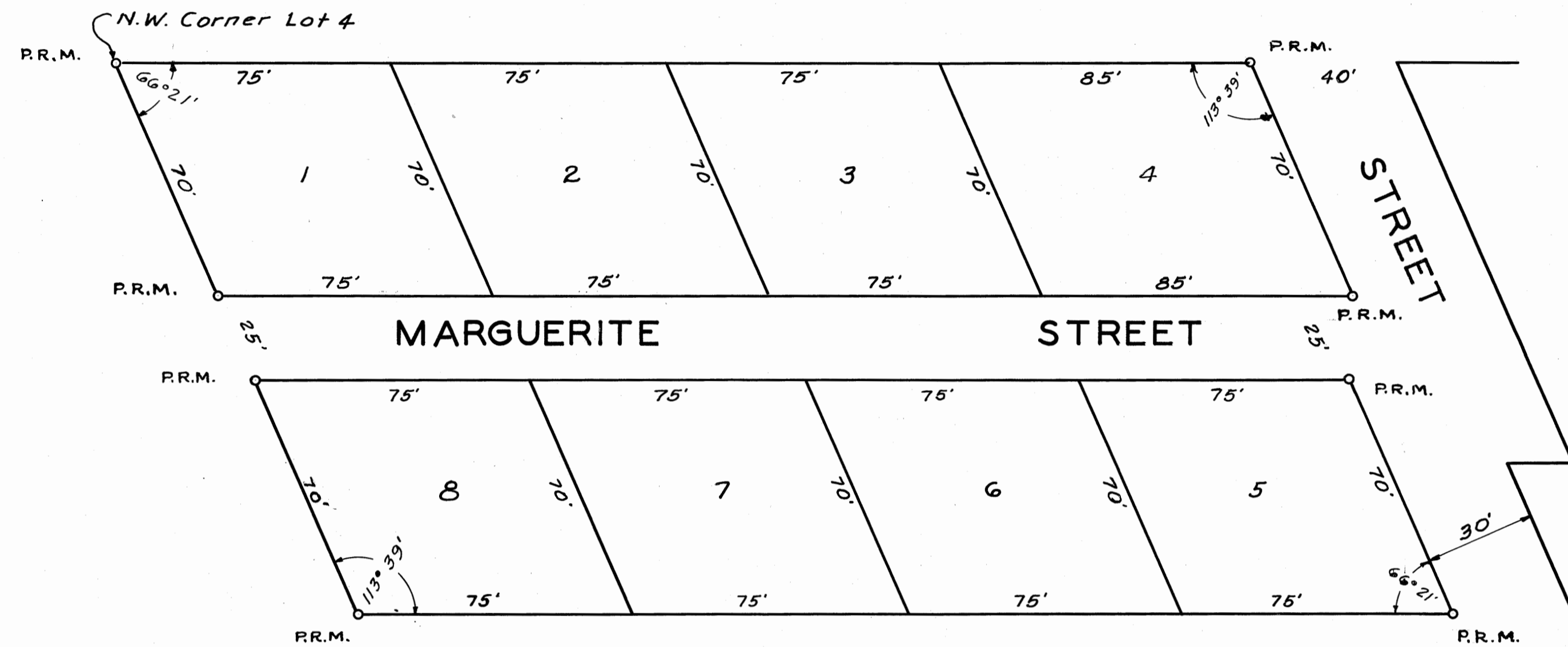


FILED & RECORDED
IN MARTIN COUNTY, FLA.
1955 NOV 22 PM 12:03
DOROTHY PIERCE, CLERK
Magnolia

WILKIE RESUBDIVISION

OF LOT 4 BLOCK 6, JENSEN BEACH HOMESITES, ACCORDING
TO A PLAT THEREOF, ON FILE IN PLAT BOOK 2 AT PAGE 41
OF THE MARTIN COUNTY, FLORIDA, PUBLIC RECORDS.

SEC. 22, TWP 37 S, RGE 41 E.
MARTIN COUNTY, FLORIDA.



Scale 1" = 30'

CERTIFICATE OF DEDICATION
STATE OF FLORIDA } s.s.
COUNTY OF MARTIN }

THIS IS TO CERTIFY that the lands as shown on this plat are the property of A. J. Wilkie and Sena M. Wilkie his wife who hereby dedicate to the public forever all streets, alleys and parks as shown thereon.
GIVEN under our hands and seals this 10th day of November 1955.

Harry B. Donley } A. J. Wilkie (seal)
Myra Heam }
Harry B. Donley } Sena M. Wilkie (seal)
Myra Heam }

STATE OF FLORIDA } s.s.
COUNTY OF MARTIN }

On this day personally appeared before me, an officer authorized to take acknowledgments of deeds etc., A. J. Wilkie and Sena M. Wilkie his wife, to me well known and known to be the persons who executed the within Dedication, and acknowledged that they executed the same for the purposes therein expressed. And the said Sena M. Wilkie wife of the said A. J. Wilkie upon an examination taken by me separately and apart from her said husband, acknowledged that she executed the said dedication freely and voluntarily and without any constraint, compulsion, apprehension or fear of or from her said husband.
Witness my hand and seal this 10th day of November 1955.

Harry B. Donley
Notary Public, State Florida at
Largo. My commission expires

ENGINEER'S CERTIFICATE
STATE OF FLORIDA } s.s.
COUNTY OF MARTIN }

I HEREBY CERTIFY that this Plat is made from an actual survey made by me, that it is a correct representation of the land platted, and that permanent reference monuments have been placed as called for under Chapter 177, Florida Statutes Annotated.
Dated this 10th day of November 1955.

J. W. Whitice
J. W. Whitice, Registered Land Surveyor
Florida Certificate #758

CERTIFICATE OF CLERK OF CIRCUIT COURT
STATE OF FLORIDA } s.s.
COUNTY OF MARTIN }

I, Clerk of the Circuit Court of Martin County, Florida, do hereby certify that I have examined this plat and that it complies in form with all of the requirements of Chapter 177, Florida Statutes Annotated. This Plat filed for record on the 22nd day of November 1955, and recorded on page 34 of Plat Book 3, in the office of the Clerk of the Circuit Court of Martin County, Florida.

Dorothy Pierce
Clerk of the Circuit Court of
Martin County, Florida.

CERTIFICATE OF APPROVAL

THIS IS TO CERTIFY that this Plat has been approved by the Board of County Commissioners of Martin County, Florida.
Dated this 22nd day of November 1955.

Carl E. Howell
Chairman, Board of
County Commissioners

EXAMINED AND APPROVED BY:

James E. Brock
COUNTY SURVEYOR

